



PENGUIN PRO

CLEANING IN FOODSERVICE & HOSPITALITY

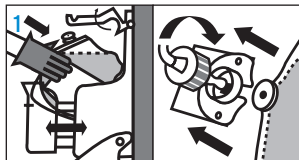
The PENGUIN PRO Dispenser is the preferred system to dispense and dilute highly effective cleaning products into ready-to-use solutions. The equipment provides safe handling for the operator, and prevents contact with the concentrate.

- Optimum cost through exact dispensing of highly effective products
- Especially designed for use in foodservice, catering and building cleaning
- Flexible system for sink, bucket and spray bottle filling
- Easy handling and safe for employees

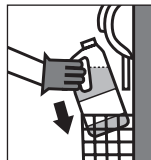


USE INSTRUCTIONS

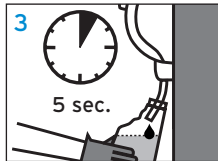
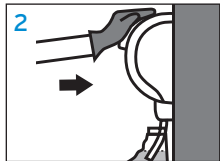
Pouch Connection



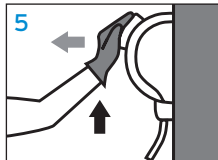
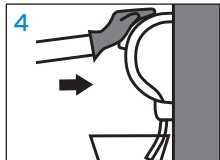
Can Connection



Spray Bottle Filling



Bucket filling



Select the appropriate product cabinet.

Standard use: 2l pouch or 5l jug holder

- 1 Place pouch into the product storage cabinet, and connect the tubes or place the product can underneath the dosing unit.
- 2 For bottle filling, place an empty bottle into the bottle holder, and push the blue button.
- 3 Wait a few seconds before removing the spray bottle.
- 4 For bucket and sink filling, directly dispense the product by pushing the blue button.
- 5 For easy handling you can use the lock-in feature.

SAFETY

Only For Use With Ecolab Products.

Your Ecolab specialist will install and adjust the unit to suit your needs.

For further information and safety instructions, see product label and safety data sheet.

TECHNICAL SPECIFICATIONS

- | | |
|--------------------------|----------------------|
| ■ Dosage range | 0,2 ml/l to 250 ml/l |
| ■ Working pressure | 1,76 to 5,86 bar |
| ■ Temperature | 4 to 40°C |
| ■ Recom. Install. Height | 130cm |
| ■ Water connection | 3/4" male thread |
| ■ Suction lift | Max. 1,5 meter |
| ■ Material | Chem. Res. Plastic |
| ■ Size | 300x160x170mm |
| ■ Weight | 1,46 kg |
| ■ Approvals | EN1717 |